

# *The Pipeline* - Edition 13



## DID YOU KNOW?



*WE ARE OFFERING CUSTOMIZED  
ONLINE TRAINING*

*+*

*CONTINUING EDUCATION  
CREDITS*

*EMAIL OR CALL YOUR SALESPERSON  
BELOW TO SCHEDULE!*

For questions regarding any of these products or training,  
please call our office 314-524-4424,  
contact your salesperson directly  
or use the email link below:

[Brian Greenwald](#) (314-873-5822)

[Dave Meglio](#) (314-610-7139)

[Ed Snyder](#) (314-283-2861)

[Eric Ripp](#) (314-363-3145)

[Jason Kyle](#) (314-805-2323)

[Mike Meglio](#) (314-570-7454)

[Nick Frederking](#) (636-893-7550)

[TJ Frederking](#) (636-262-6756)

## New Products From A Favorite

## *New Arlington Product Videos*

### Vapor/Water Barrier Cover for Exterior Fixture Boxes



Designed for exterior fixture boxes, Arlington's vapor/water barrier cover prevents water and air from entering around a box installed on exterior sheathing, without the need for caulking – or a gasket. It saves time and money.

### Heavy Duty, Non-Metallic QuickLatch™



Arlington's heavy duty NM3100 series QuickLatch™ with installed strut clip holds RIGID and EMT securely on strut. Use as you would a pipe hanger.

### J Hooks for Communications Cable



Cable Hooks are the super convenient solution for running communications cable. Available in heavy duty Plastic and two styles in Steel.

*More New Products From Arlington*



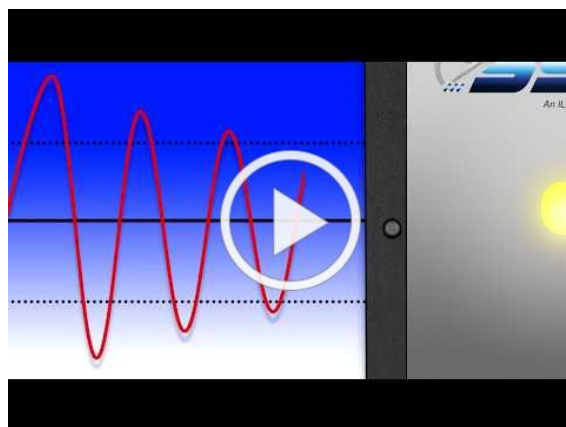
*SURGE  
PROTECTION  
REDEFINED*



## ***NOT ALL SURGE PROTECTION IS THE SAME!***

Be sure your surge protection handles low band width oscillatory ringwave.

CLICK BELOW TO WATCH OSCILLATORY RINGWAVE  
VIDEO



## **Advantage® Panel Mounted Surge Protectors**



SSI's Advantage® parallel connected surge protectors (surge protective devices) are the flagship of our product line. This surge suppressor can be found protecting the mission critical systems of some of the most recognizable companies in the world. When system failure is not an option, you needed the proven performance of the Advantage® line.

**"Click the Pic" for more info**



# Telecom Surge Protectors

Telecommunication lines are very often the overlooked "back door" for transients to enter your facility. Telecommunication equipment often suffers the highest rate of catastrophic damage to any system within a facility.



## Smart Grid

With the exclusive SG product line, SSI has products designed specifically to protect the sensitive AC to DC power inverters. SSI recommends a systems or layered approach when protecting incoming power and energy generation systems.



## Medium Voltage Arresters

The Most Advanced Medium Voltage Surge Protective Device Available Today

The Medium Voltage Arrester series of parallel connected surge protective devices represent the latest in surge protective device design and performance.

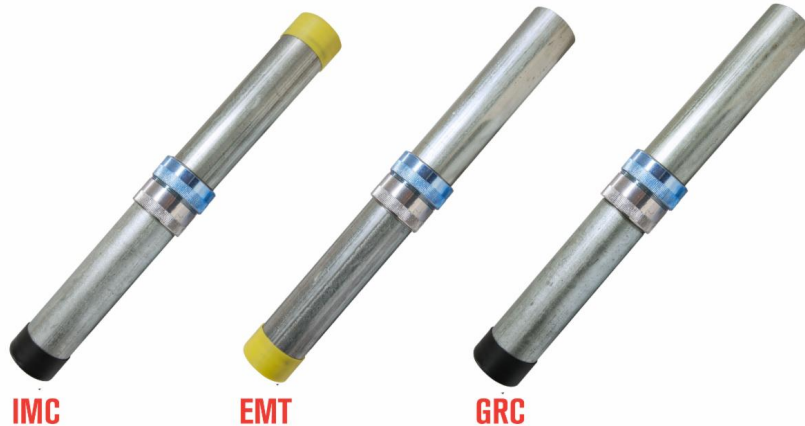


**EC & M 2019 PRODUCT OF THE YEAR**

**Atkore**<sup>TM</sup>  
**Allied Tube  
& Conduit**

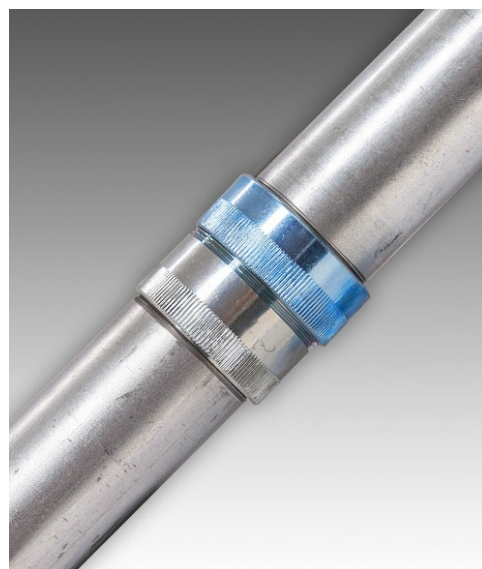
**Super Kwik-Couple® GRC**

# The Industry's Best All-in-One Conduit Solution!



- Fastest installation times
- UL listed for wet and dry locations
- Permitted for use in Class I Division 2 locations per section 501.10(B)(1) of the NEC
- Blue colored coupling design allows inspectors to easily identify wet location approval
- Patented UL approved design to connect both threaded and unthreaded conduit
- Even connect to EMT
- Eliminates the need for field threading
- Coupling design allows for easy installation in compact areas
- Available in trade sizes ½" to 5"
- Also available on elbows

For fast & easy GRC installations, make it Super Kwik-Couple Raintight Conduit!



Super Kwik Couple  
Video

---

---

GETTING AHEAD OF THE CURVE

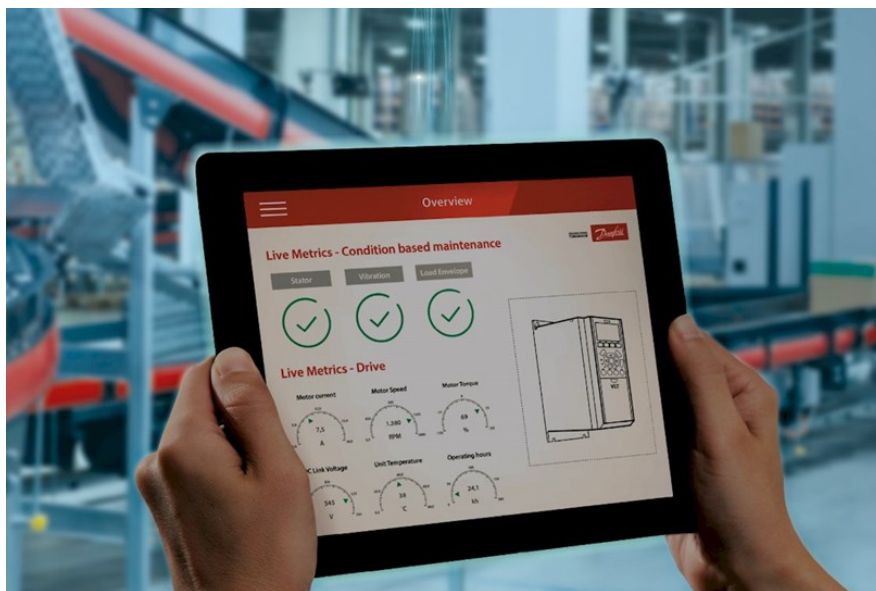




## Condition-Based Monitoring

Turn the VFD you already have  
into the smartest sensor in your system

Use intelligent drives with embedded condition-based monitoring functionality to get the right information at the right time, so you can detect faults earlier. Find out how.



Keep essential infrastructure running at optimal uptime.

CONDITION-BASED MONITORING  
VIDEO

Unplanned downtime can be catastrophic for essential infrastructure and those who depend on it today. Danfoss solutions empower those frontline operators - both on site and remote - to predict unforeseen early failures thereby better planning for maintenance and keeping your essential infrastructure running at optimal uptime. See how you can turn the frequency drive you already have into the smartest sensor in your system. A sensor that enables predictive and condition-based monitoring capabilities, processes data on the edge, and sends data wherever it's needed. See how intelligent drives solve potentially critical problems in three essential applications.

Visit the Danfoss  
Website



---

---

## Employee Spotlight

### JONATHAN LEONE



Jonathan Leone is Kansas City born and raised, where he graduated from Rockhurst High School. Although he played football for a couple of years and was on the track team for four, he received a state letter, and the top rating, for his accomplishments in choir which included participation in five different groups. His music talents include guitar, ukulele and piano which he began playing when he was only four years old. Music has always been a big part of his life. He also belonged to a dance group that traveled

and performed traditional Filipino dance. Somehow, he also managed to find time to earn the Boy Scouts of America's highest honor, the rank of Eagle Scout. He left Kansas City in 2009 to attend Creighton University, in Omaha, Nebraska, where he pursued a major in Business Intelligence and Analytics. Through college he enjoyed working as a DJ, and as a server at a local wine bar. He is very interested in movies and filmmaking. Some of his favorites are Stanley Kubrick, Alfred Hitchcock, Paul Thomas Anderson, and Wes Anderson. When he is not watching the director's cut of a favorite film, he does confess to being an avid video gamer. He likes to spend time with his 9 year old daughter, Jocelyn, and admits he is guilty of teaching her the finer points of gaming acumen. Although his favorite way to spend his free time is just being a dad, he also loves camping and the outdoors, and enjoys visiting his brother in Denver. About four and half years ago Jonathan started at Meglio. Then a couple of years ago, being the self-proclaimed computer nut he is, he taught himself the art of creating computer aided lighting layouts. It is his job to make sure all installations are up to code and follow IES standards. We are now proud to call him one of our better accomplished Lighting Applications Specialists.

Tell us about a Meglio employee that went above and beyond & be entered to win one of five \$25 Visa Giftcards.

